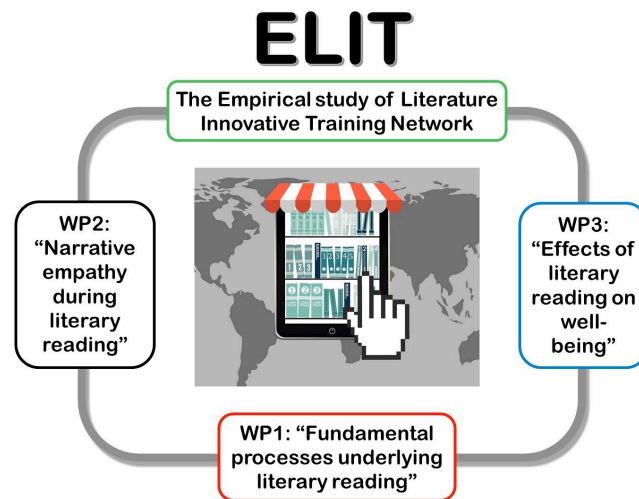


ELIT - Empirical Study of Literature Innovative Training Network



Final conference

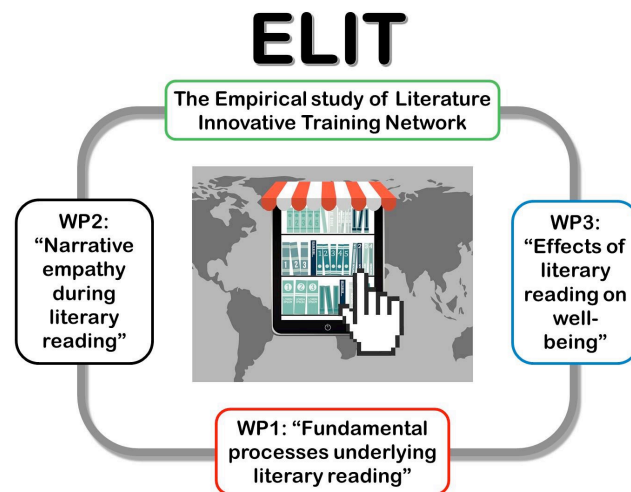
Monopoli 26/09/2023



ELIT - Empirical Study of Literature Innovative Training Network

Kick-off meeting

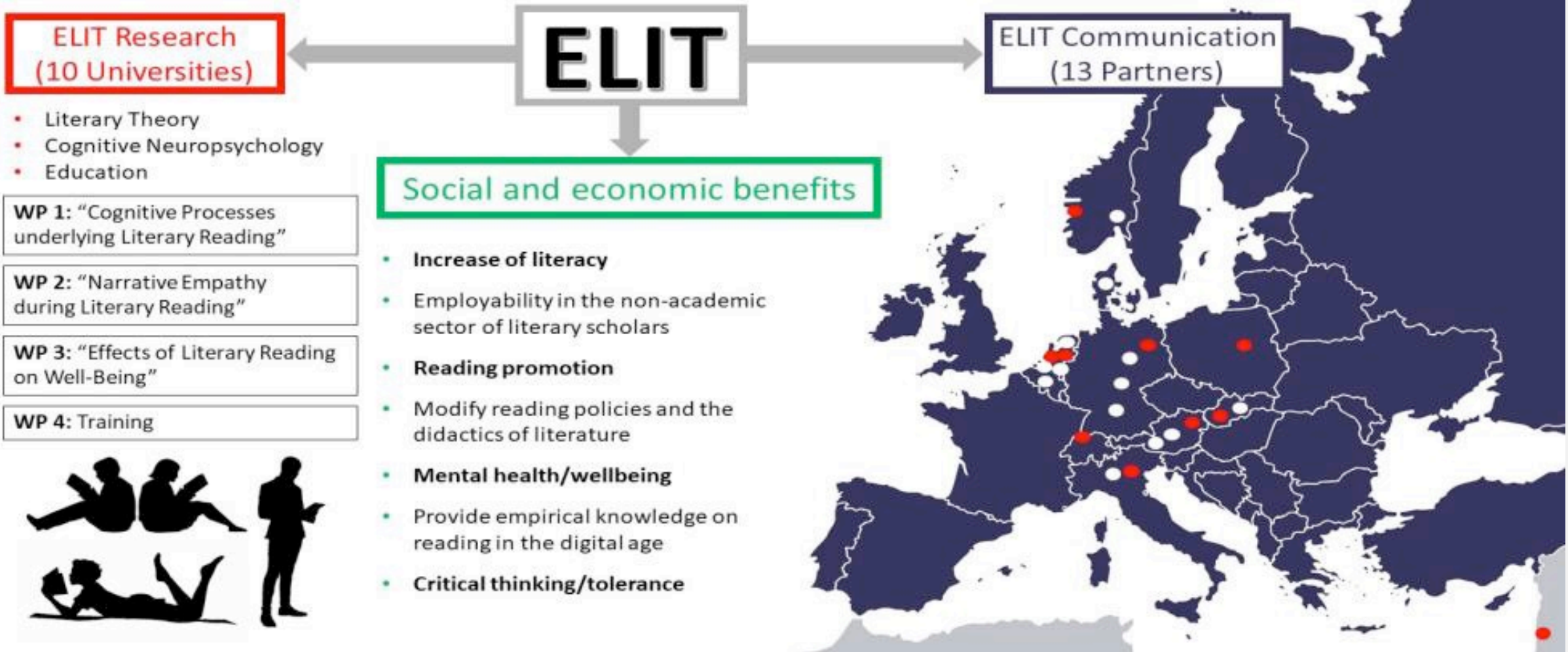
Verona 23/03/2020



WHAT is ELIT?

The Empirical Study of Literature Innovative Training Network (ELIT) is an EU network whose mission is to provide a Joint/Double Doctorate level training programme, on literary reading in the digital age.

The main aim of the coordinating team was to implement the grant agreement signed by all beneficiaries that forms the basis of our ESRs' doctoral programme



The **Grant Agreement**, signed by the 10 beneficiary universities of ELIT, committed institutions and tutors to several obligations, including:



offering a teaching and training programme



paying the salaries and research of the ESRs



supervising their thesis work



contributing to the network's institutional activities.

Teaching and networking activities



3 TRAINING
SCHOOLS



3 SEMINARS



6 WORKSHOPS
(+ADDITIONAL
TRAINING AND
WORKSHOP
ACTIVITIES)



4 GENERAL
ASSEMBLIES +
SUPERVISORY
BOARD



By joining ELIT, each ESR has committed her/himself to:



following educational and training activities



participating in institutional and dissemination activities



spending 12 months in the foreign partner institution (all our PhDs are co-tutelle/joint agreements)

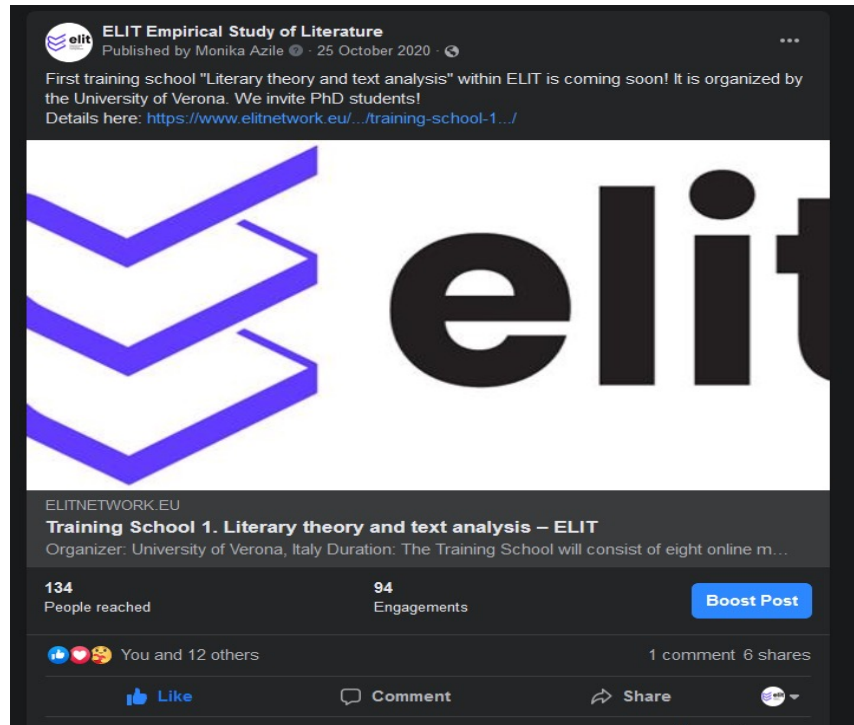


participating in a 2-month internship with a non-academic partner



writing the doctoral thesis.

The European University System

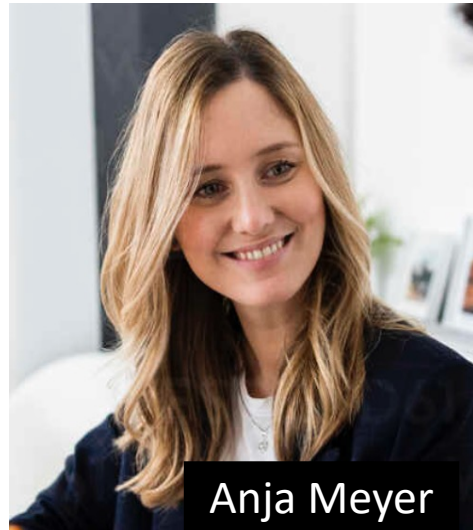
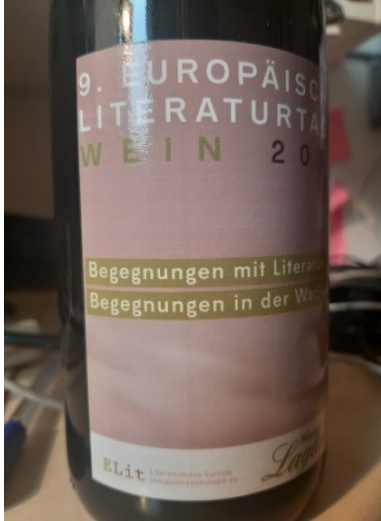


Scientific reputation

“Do not ignore people”



The past and the future (of the ELIT coordinating team)



Anja Meyer



Alessio Lorenzi



Paul Sopcak



Simone Rebora



Zuzana Petrova



Anne Mangen



Inclusive Humanities.

Development perspectives in research and teaching of foreign languages and literatures (2023-2027)



Ciao!

